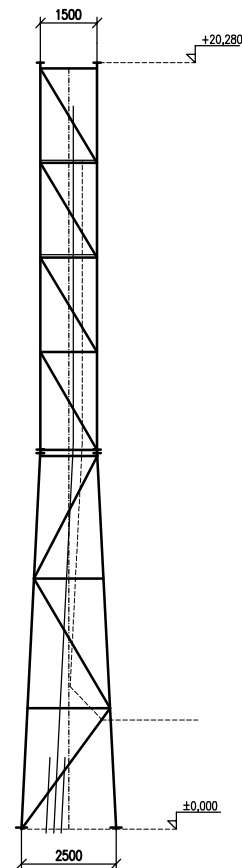
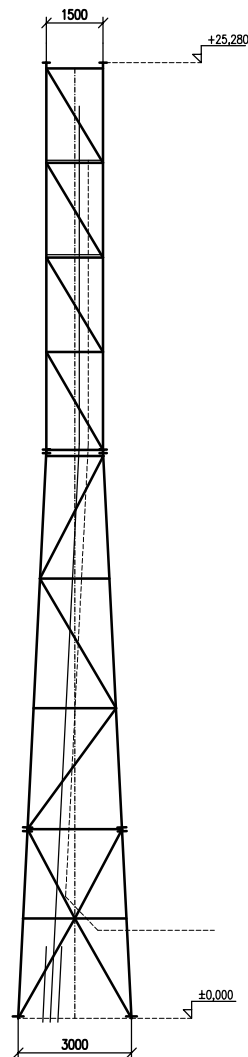


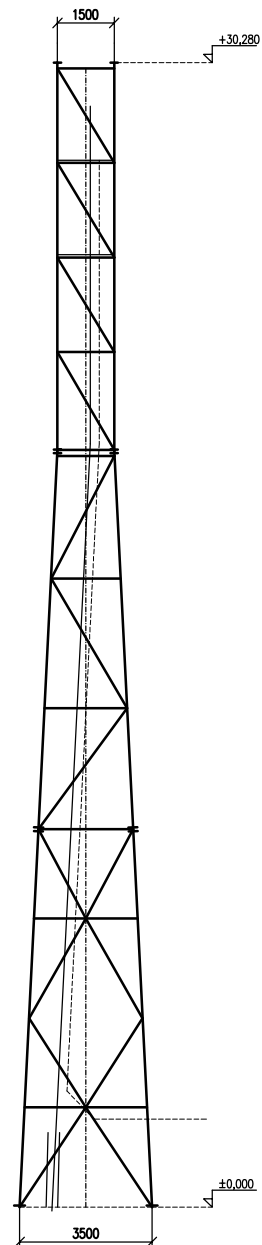
KORAS EPL 20.10.5



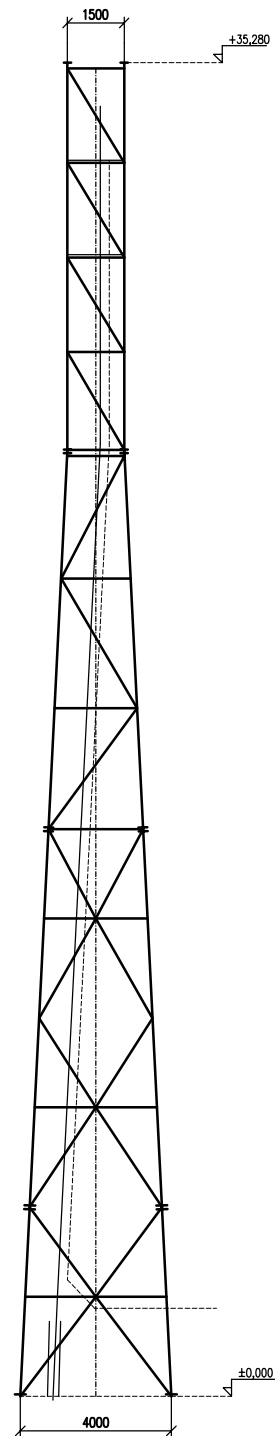
KORAS EPL 25.10.5



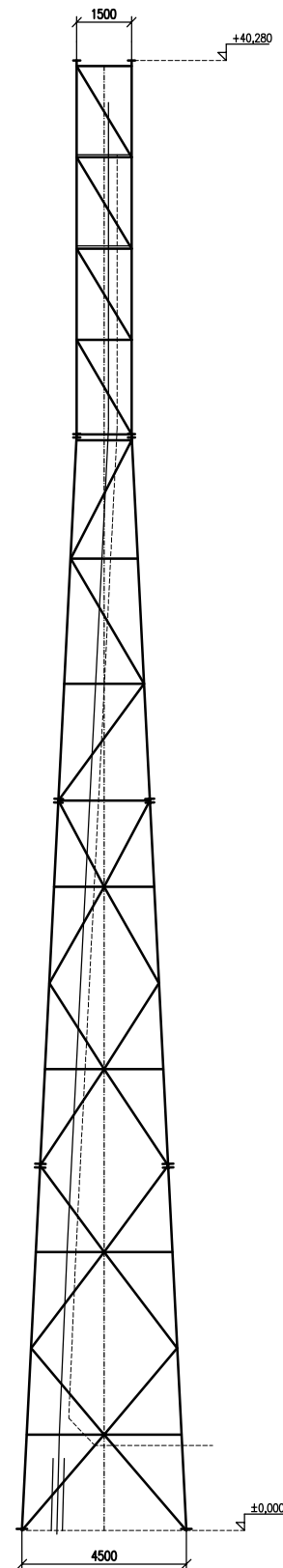
KORAS EPL 30.10.5



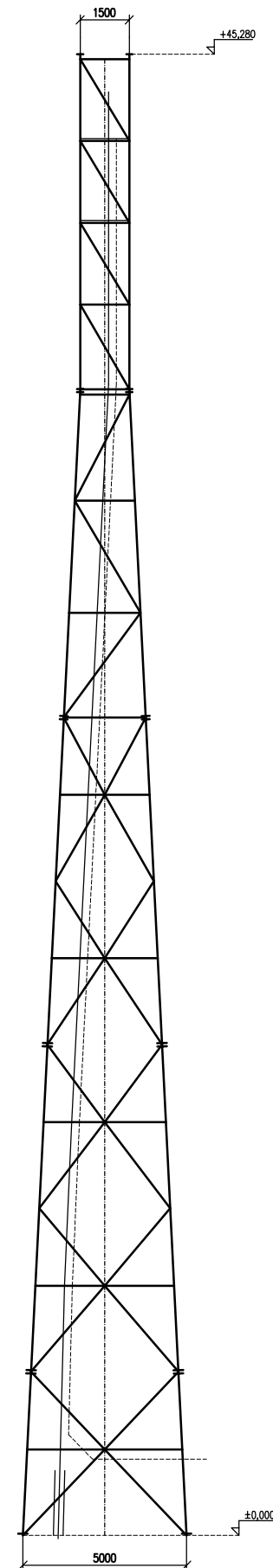
KORAS EPL 35.10.5



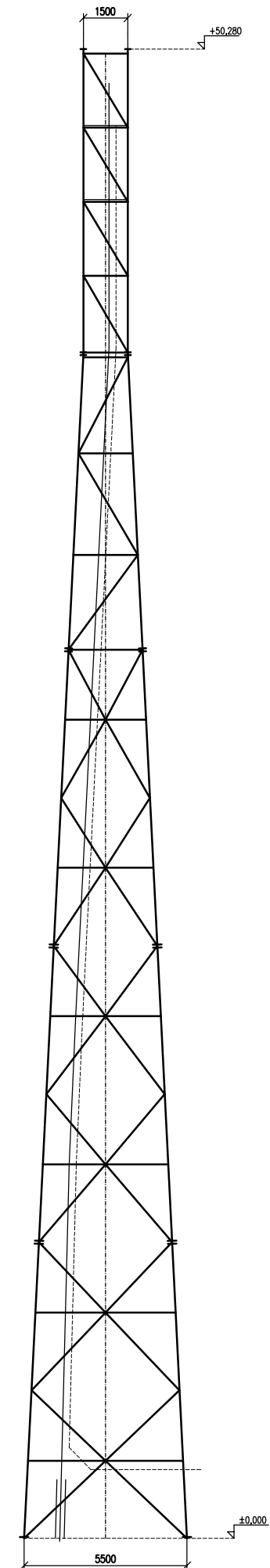
KORAS EPL 40.10.5



KORAS EPL 45.10.5



KORAS EPL 50.10.5



TYPOVÉ ČTYŘBOKÉ PŘÍHRADOVÉ STOŽÁRY – typ KORAS V, verze EPL xx.10.5

- návětrná plocha antén 10m² vč. tvarového součinitele
- větrová oblast 5
- natočení ve vrcholu max.1,0° pro zatížení dynamickým větrem podle ČSN 73 0035