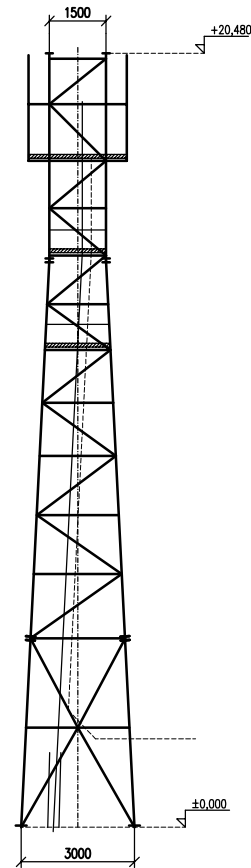
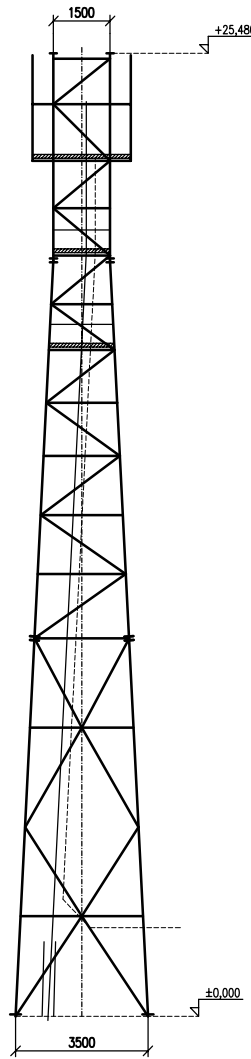


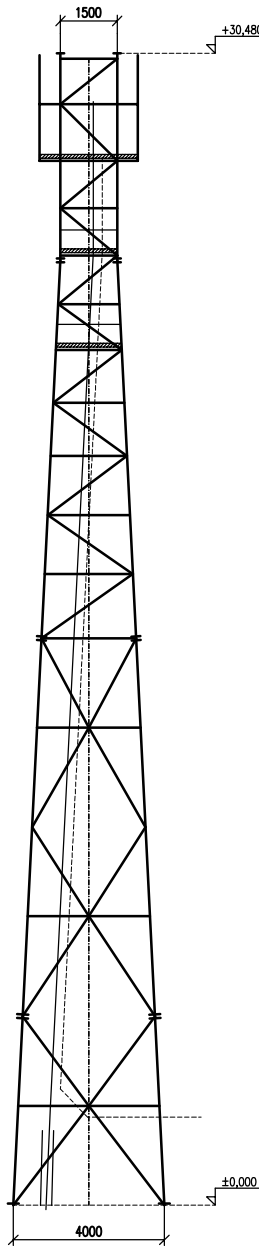
KORAS EPS 20.20.5



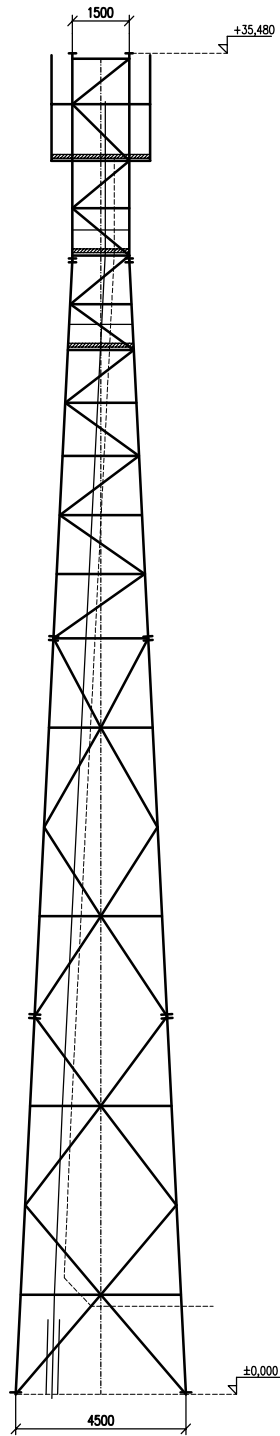
KORAS EPS 25.20.5



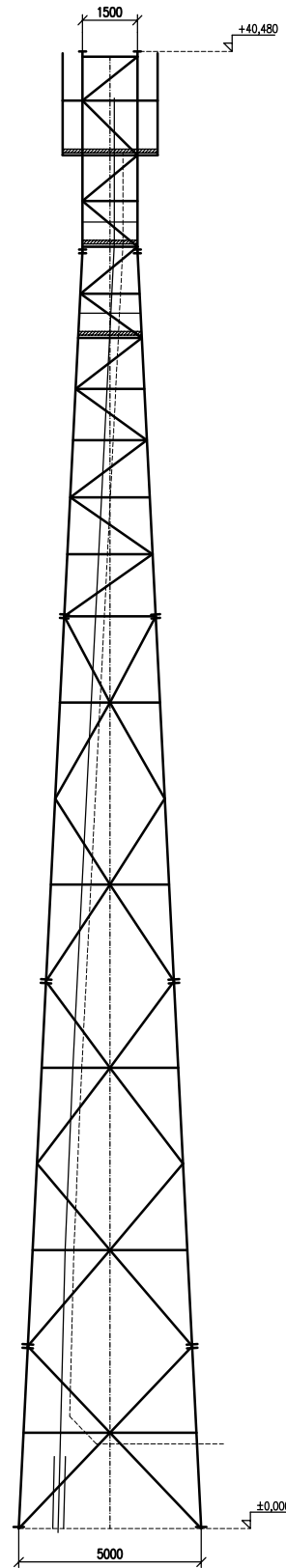
KORAS EPS 30.20.5



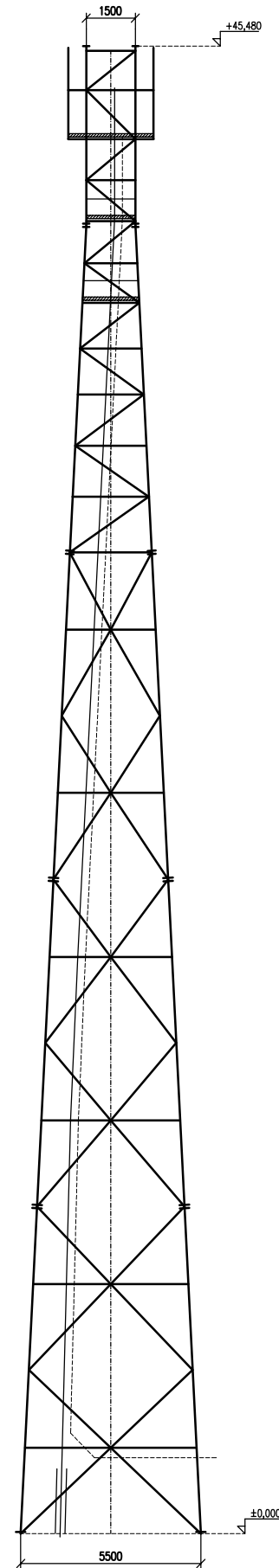
KORAS EPS 35.20.5



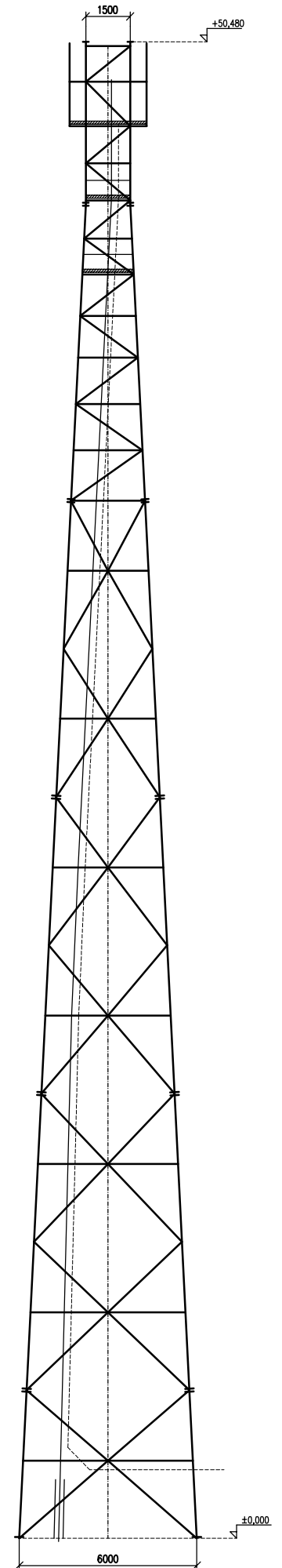
KORAS EPS 40.20.5



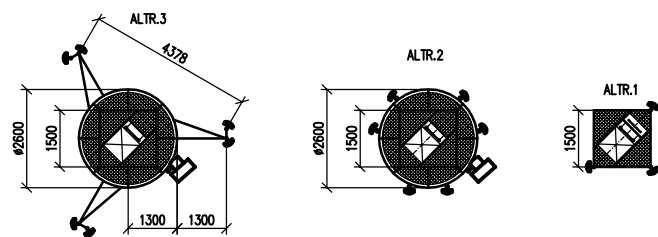
KORAS EPS 45.20.5



KORAS EPS 50.20.5



HORNÍ PLOŠINA



TYPOVÉ ČTYŘBOKÉ PŘÍHRADOVÉ STOŽÁRY – typ KORAS V, verze EPS xx.20.5

- návětrná plocha antén 20m² vč. tvarového součinitele
- větrová oblast 5
- natočení ve vrcholu max.0,5° pro zatížení dynamickým větrem podle ČSN 73 0035